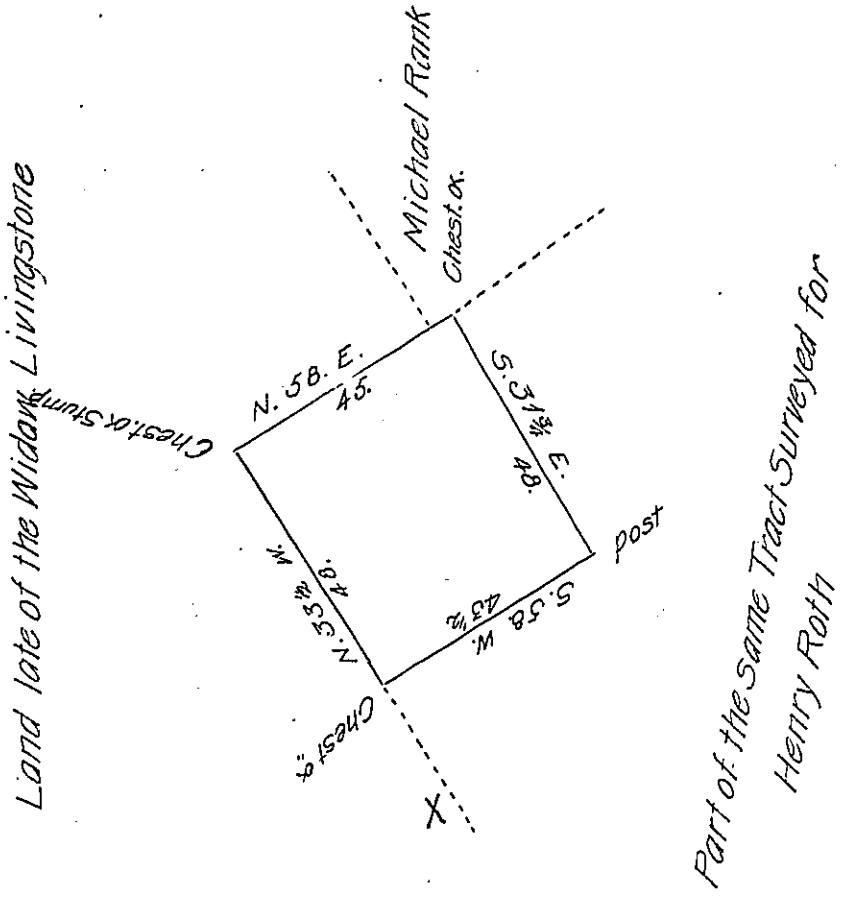


See pg. 151



A Draught of a piece or Tract of Land situate in Earl Township Lancaster County containing $12\frac{1}{2}$ A^s and the Usual Allowance of Six P^t Cent for Roads &c. Surveyed the 27th Day of March A. D. 1792. for George Morter [It being part and parcel of a Larger Tract of Land Containing 116 A^s & 154 P^s. and Allowance Surveyed unto a Certain Walter Fishbach by Virtue of a Warrant Dated the fourth day of December A. D. 1750.

Pr. Henry Ream D.S.

To Daniel Brodhead Esq.
Surveyor General

IN TESTIMONY that the above is a copy of the original remaining on file in the Department of Internal Affairs of Pennsylvania, made conformably to an Act of Assembly approved the 16th day of February, 1833, I have hereunto set my Hand and caused the Seal of said Department to be affixed at Harrisburg, this twenty ninth day of September 1904.

Lucas B. Perry
Secretary of Internal Affairs.